



# p130 Cas (phospho Tyr410) Polyclonal Antibody

<b>Catalog No</b>	YP-Ab-03560
<b>Isotype</b>	IgG
<b>Reactivity</b>	Human;Mouse;Rat
<b>Applications</b>	WB;IHC;IF;ELISA
<b>Gene Name</b>	BCAR1
<b>Protein Name</b>	Breast cancer anti-estrogen resistance protein 1
<b>Immunogen</b>	The antiserum was produced against synthesized peptide derived from human p130 Cas around the phosphorylation site of Tyr410. AA range:376-425
<b>Specificity</b>	Phospho-p130 Cas (Y410) Polyclonal Antibody detects endogenous levels of p130 Cas protein only when phosphorylated at Y410.
<b>Formulation</b>	Liquid in PBS containing 50% glycerol, 0.5% BSA and 0.02% sodium azide.
<b>Source</b>	Polyclonal, Rabbit,IgG
<b>Purification</b>	The antibody was affinity-purified from rabbit antiserum by affinity-chromatography using epitope-specific immunogen.
<b>Dilution</b>	WB: 1/500 - 1/2000. IHC: 1/100 - 1/300. ELISA: 1/5000.. IF 1:50-200
<b>Concentration</b>	1 mg/ml
<b>Purity</b>	≥90%
<b>Storage Stability</b>	-20°C/1 year
<b>Synonyms</b>	BCAR1; CAS; CASS1; CRKAS; Breast cancer anti-estrogen resistance protein 1; CRK-associated substrate; Cas scaffolding protein family member 1; p130cas
<b>Observed Band</b>	130kD
<b>Cell Pathway</b>	Cell junction, focal adhesion . Cytoplasm . Cell projection, axon . Unphosphorylated form localizes in the cytoplasm (By similarity). Localizes to focal adhesion sites following integrin engagement (By similarity). .
<b>Tissue Specificity</b>	Widely expressed with an abundant expression in the testis. Low level of expression seen in the liver, thymus, and peripheral blood leukocytes. The protein has been detected in a B-cell line.
<b>Function</b>	domain:A serine-rich region promotes activation of the serum response element (SRE).,domain:Contains a central domain (substrate domain) containing multiple potential SH2-binding sites and a C-terminal domain containing a divergent helix-loop-helix (HLH) motif. The SH2-binding sites putatively bind CRK, NCK and ABL SH2 domains. The HLH motif is absolutely required for the induction of pseudohyphal growth in yeast and mediates heterodimerization with CASL.,domain:The SH3 domain is necessary for the localization of the protein to focal adhesions and interacts with one proline-rich region of focal adhesion kinase 1.,function:Docking protein which plays a central coordinating role for tyrosine-kinase-based signaling related to cell adhesion. Implicated in induction of cell migration. Overexpression confers antiestrogen resistance on breast cancer cells.,PTM:Focal adhesion kinase 1 phosphoryl



## Background

BCAR1, or CAS, is an Src (MIM 190090) family kinase substrate involved in various cellular events, including migration, survival, transformation, and invasion (Sawada et al., 2006 [PubMed 17129785]).[supplied by OMIM, May 2009],

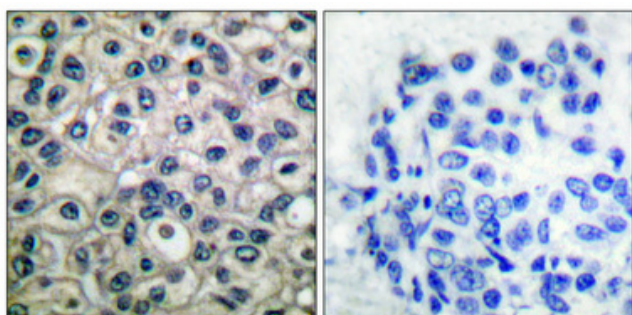
## matters needing attention

Avoid repeated freezing and thawing!

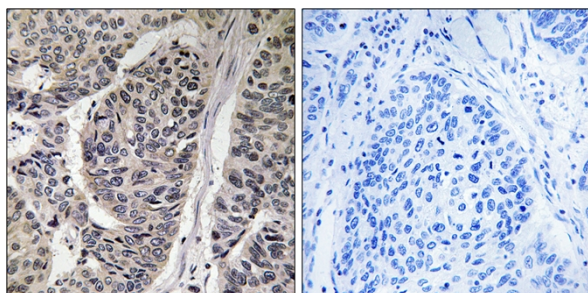
## Usage suggestions

This product can be used in immunological reaction related experiments. For more information, please consult technical personnel.

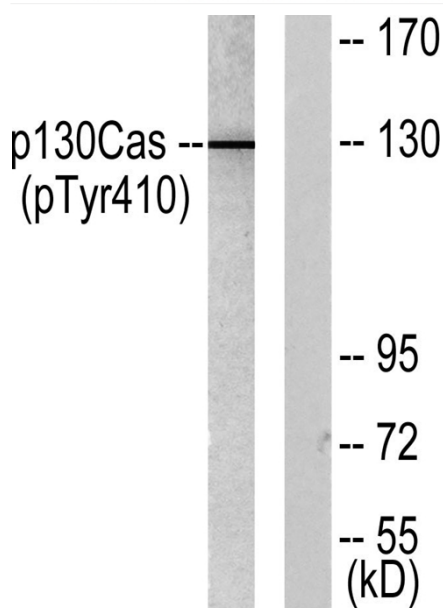
## Products Images



Immunohistochemical analysis of paraffin-embedded Human breast cancer. Antibody was diluted at 1:100(4° overnight). High-pressure and temperature Tris-EDTA, pH8.0 was used for antigen retrieval. Negative control (right) obtained from antibody was pre-absorbed by immunogen peptide.



Immunohistochemistry analysis of paraffin-embedded human breast carcinoma, using p130 Cas (Phospho-Tyr410) Antibody. The picture on the right is blocked with the phospho peptide.



Western blot analysis of lysates from NIH/3T3 cells, using p130 Cas (Phospho-Tyr410) Antibody. The lane on the right is blocked with the phospho peptide.